

# KAFCE NEWS

Mar. 2021  
vol. 55  
no. 1

OFFICIAL PUBLICATION of the KANSAS ASSOCIATION FOR FAMILY AND COMMUNITY EDUCATION

## **PRESIDENT - NANCY KERNICK'S REPORT - "NETWORKING WITH NANCY"**

As 2021 has a new beginning, we are acquiring new ideas as we continue to accomplish our goals and report what has been accomplished this year. Congratulations to all Kansas FCE members for reaching out to others. Our FCE members have definitely been adapting to this Pandemic by making many face masks which we all should be wearing to keep from spreading COVID and the way that members are holding meetings, presenting lessons for FCE members with the use of zoom. What an inspiration our FCE members are in thinking outside the box.



Since March 11, 2020, the World Health Organization (WHO) declared coronavirus, COVID-19 Pandemic, continues to work its way across the Nation, and we are monitoring developments and adapting. In the middle of the current challenge, K-State Research and Extension has been here to help every Kansan thrive and that Mission remains unchanged. We have all adapted to the change with the cancellation of KAFCE Board Meeting and KAFCE State Conference and Local, County, and Area Meetings. ZOOM is the next thing for meetings, and we had our first experience with this for the Board of Directors, October 19, 2020 meeting via ZOOM in connection with the EPC Leadership Training, and requested all reports be written and emailed to me to send out before the meeting. It was a very successful meeting and everything went well and we finished in plenty of time for the EPC Training.

I continue to listen to the members with their ideas and all the considerations for the good of FCE and the impact on what the Board has to do and work with as a blessing to "Network" with so many. I appreciate the FCE Members, as they stand behind the Board and achieve things that cannot be achieved by the Board alone. Kansas FCE members are united and with that all together, we can figure out how to get it done. The challenge to look ahead for opportunities and to encourage others, to bring out the best in them, to speak words that are affirming, to let others know they are valued, and to call out deeds of greatness and helping others to become all they are created to be.

**CWC** -As State President, I reported the current offices for their mailing list.

**NAFCE Conference** -As State President, I downloaded and signed the License through Headquarters for access to the Lessons and Hearth Fire Series that would have been handed out at Conference. With Vision for the Future everyone is looking forward to 2021, in Cincinnati.

**August Mailing** - County Council President Officers sheet is very important to get their name, email, address, phone number, and their Agent in charge to send this large packet of information by e-mail. Each Independent Member receives a packet.

**Membership reports** and certificates are signed for years of service and FCE years.

**Lesson material** - With State EPC Leadership Training not being held in-person, lesson materials were picked up and distributed around the State for all Area's, so I traveled to Burlington and met with DeLores Walden, and It was great to travel and have a good visit.

**KAFCE NEWS** - Still have those days with the challenge of the KAFCE News from printing, postage, and getting articles in on time. I continued to check with the U.S. Post Office for bulk rate permit and had to contact NAFCE and get the official requirements for the 'name change' we had gone through - but we did get it finally, and our permit is working with National on the requirements to do it correctly. Thank you to Edith McClain, Sherry Linneman, and the printer.

As I continue on to each new day, I cherish the experience, and be thankful for the other board members who are so willing to listen and have suggestions. As President, there are some challenging days in my life, some of them most pleasurable and some are the most frustrating days of my life.

Thanks to everyone for all the many conversations by phone calls, e-mails, and personal visits from the members during this Covid-19 Pandemic, in our life about continuing membership or becoming Independent Member, or even to disband their FCE Unit, and keeping them encouraged to continue on.

As we continue the challenge to look ahead for opportunities and to encourage others, to bring out the best to be all they were created to be. The challenge we face for each tomorrow and be a part of the solution as we continue "Networking with ZOOM" Vision in the Future. If you have any questions, suggestions, ideas or concerns, please let me know. Contact me at my home phone or by email.

*Nancy Kernick*  
KAFCE President

**- THANKS FOR BEING A MEMBER OF FCE -**



### **Vice President Report - Faye Spencer**

**2020 Education Program Year:** Changes were made to the Accomplishment Report for 2020. This report became a single form that could be submitted by a FCE Unit, County Council or an Independent Member. An additional change was the choice that the FCE Unit, County Council or Independent Member could provide their tabulated data yet decide whether or not to have their lesson be judged or not judged for an award. Of the 79 FCE Units, sixty-two submitted their Accomplishment Report. But only 25 reports were marked to be judged. State EPC met via Zoom Meeting to finalize scoring.

A list of Area Award Winners of Accomplishment Reports (FCE Unit and County Council), Community Service Projects (FCE Unit and County Council), and 100% Reporting and certificates have been created, printed and distributed to Area Directors.

2020 Program Evaluation Summary. 29 surveys responded. **Top Choices:** "Antibiotics: History, Use and Misuse"; "Bonding Thru Board Games"; "ACWW: WE Fund"; "Where is the 'Land Down Under'?" **The least liked lessons:** "Garden to Plate: Food Safety for School and Community"; "The Science of Family Meals".

National FCE Program/Project Report is being prepared. Deadline is April 15. At this time there will not be any competition for awards based on projects.

**2021 Education Program Year** -Lesson materials and forms were emailed to KSU agents.

**2022 Education Program Year:** Theme: "FCE: Educate. Activate. Motivate"

State EPC members are writing new lessons. K-State lesson offered 3 new lessons.

Forms are being updated and improved.

August 30 to 31, 2021 for KAFCE State EPC Leadership Training

### **State Treasurer Report – DeLores Walden**

- ◇ Advantages of belonging to NAFCE are: Prestige of belonging to a National Organization; Hearth Fire series that are free with your KAFCE Lessons or extras can be boughten for a minimal fee; Jewelry is also available; other leadership material is available at a minimal fee; liability insurance available for FCE sponsored activities; friends of different cultures and locales; National Conferences in different parts of the USA with workshops, speakers, and tours; FCL training (Family Community Leadership) and affiliation with Associated Country Women of the World (ACWW).
- ◇ Advantages of belonging to KAFCE are similar to NAFCE plus you have friends over the state of Kansas; the training to become an officer either local, county, area or state level; lessons from K State specialists and our own State EPC (Educational Program Committee) Committee and the educational material to make a Difference in your family, your community and the World.
- ◇ Tasks of your state treasurer that were done in January were-2020 income tax was done, In- House audit was done with no mistakes found, and AIL (American Income Life Insurance Company) was paid giving every member \$4,000 accidental and dismemberment insurance.
- ◇ We have not been able to give any scholarships or Joann Newby Grant for the last two years. To be able to give scholarships/grants again we need members to contribute to those funds. If any questions, please call or email me. DeLores Walden, KAFCE Treasurer wintersdj1@cox.net or 785-379-0666

**KAFCE – SAVE YOUR INK CARTRIDGES** (put in a plastic bag to prevent drying out) and bring or send them with other attendees to KAFCE State Conference. It is a very good money-making project for the KAFCE Board to carry on the business of the organization. The recycling company pays for ink cartridge brands of HP, Cannon, Collins and Neopost/Hasle.

**SAVE THE DATE**  
**October 4th and 5th, 2021**  
 2021– NE Area  
 Ramada Inn, Topeka



**ESSAY AND ARTWORK WINNER**

– No applications have been received –

- The 2021 Essay and Artwork theme is "Responsibility". All of the forms are downloadable from NAFCE website. Since schools are conducting learning in a variety of settings, this will be a time to think outside of the box to have the 4th graders participate, beginning September 1, 2020 and continue to March 31, 2021.
- Fourth graders through all Community Youth Programs, 4-H Clubs, Girl or Boy Scouts, schools of public, private or home settings, or after school programs may participate. Contact the organization/administrator/teacher/leader to arrange a visit and provide the information.
- Collect the essay entries and signed forms. FCE Units will evaluate and score and send winners to next level.

Finally, the KAFCE President **must receive them by March 31**, to have them judged and the winner will be mailed to NAFCE by April 15.

**Thank you to those who are extending their terms:**

South Central Area Director Bonnie Kaufman  
Southeast Area Director Jennine Marrone  
Vice President Faye Spencer

**STANDING COMMITTEES and OTHER APPOINTED POSITIONS:** Thanks to those who have accepted the position and I look forward to working with each of you as your KAFCE President. Each person asked to serve has a very special talent and emphasis to share. Together, the membership will work together to make our year a success.

- State EPC Chair Linda Hess-collecting and managing all the reports for judging
- Nominating Committee Pat Weishaar as chairman, searching for candidates
- Marketing Committee Dorene Reimer as chairman
- State 2021 Conference Chairs DeLores Walden and Tina Bailey
- State 2022 Conference Chair Marlene Faul-who will gather her SC Area as host
- Registrar DeLores Walden keeps records of recognition for members and units
- Parliamentarian Judy Fullmer who keeps us in line during our business meeting
- KAFCE News Editor Sherry Linneman receives and sets up the NEWS
- Membership List/Records Judy Fullmer keeps records to NAFCE up to date
- William Allen White Anita Felkze works with this program
- Webmaster Marcy Price keeps this up to date so to have footprint on the web

**2021 HEART OF FCE NOMINATIONS**

NE – JUDY EMERT  
NW – SHARON STRAMEL  
SE – JANE WORKS  
SC – MAIDA LAUGHLIN  
SW – JOAN JOSEFIK

**Past Presidents** are Judy Fullmer, Peggy Martens, Bernice Parker, Marcy Price, Mary Jane Adams, Sharon Giacometti and Dorene Reimer



**KAFCE BOARD MEETING REPORTS - March 5, 2021 - VIA ZOOM -  
FCE REPRESENTATIVE REPORT**

Denise Dias, FCS Agent, Johnson Co. Ext

We are still trying to navigate K-State Extension and State of Kansas COVID- protocols to offer programs across Kansas. All in-person programs must submit a plan and be pre-approved by the Director of Extension at this time. We are hopeful things will improve as vaccine roll-out continues.

Denise G. Dias, M.S., Extension Agent/Family & Consumer Sciences, Johnson County K-State Research and Extension, 11811 South Sunset Dr., Suite 1500, Olathe, KS 66061. (913) 715-7000 / (913) 715-7013 direct line / [denise.dias@jocogov.org](mailto:denise.dias@jocogov.org)

**KSU PROGRAM LEADER COORDINATOR, FCS** – Gayle Price

- Dr. Jim Lindquist is retiring after 40+ years of professional service to KState. He currently serves KSRE as the Associate Director for Field Operations. Interviews are being held for KSRE Associate Director for Field Operations.
- KSRE continues to function with a hiring freeze, for staffing. Vacant positions are only being filled by either internal searches or on a limited case by case review and administrative approval.
- KSRE administrative structure update: Research and Extension Center Director- Dr. Bob Weaber (Eastern Kansas) Eastern Kansas Research-Extension Centers, Weaber will oversee interdisciplinary crop and livestock research, extension activities and other extension programs at Parsons, Manhattan (Northeast Regional Extension Office) and various satellite locations Research and Extension Center Director- Dr. Dan Devlin (Western Kansas) Western Kansas Research-Extension Centers, Devlin will oversee interdisciplinary research and extension activities at Hays, Colby, Garden City, Tribune and satellite locations. KSRE moves from four to three Extension Regional Directors for Local Units: Eastern Kansas - Dr. Chris Onstad Central Kansas - Aliesa Woods Western Kansas - Mary Sullivan
- Dr. Elaine Johannes, has been named Kansas Health Foundation Distinguished Professor of Community Health at Kansas State University. Dr. Johannes will help lead KSRE community health initiatives, including one focused on Covid-19 vaccination call "Vaccinate with Confidence" a CDC (Center for Disease Control and Prevention) national campaign.
- Popular health and wellness national extension program, "Dining with Diabetes" is now available in an online course. Information and a link to register is available.

**NAFCE REPORTS****Secretary- Marlene Faul**

**National FCE Conference** is scheduled for Cincinnati, OHIO (plus our FCE headquarters in Florence, KENTUCKY) July 19-August 1, 2021. With COVID, will we have it? The business meeting will take place and could be on Zoom. The decisions regarding Conference will be decided by the National Board in late April or early May. The 2022 National Conference is scheduled for Portland, OREGON

**FCL – Peggy Martens****Programs-Sharon Giacometti****ByLaws -Judy Fullmer and Nancy Kernick****NAFCE President -Ardyce Snyder**



**ACWW Board Member Reports****USA Area President – Bonnie Teeples**

**UN Commission on the Status of Women-** All members have been invited to attend the UN Commission on the Status of Women. It is being held virtually on **March 18, 2021**. The title of this year's meeting is *"Rural Women's Role in Global Citizenship"*. See the ACWW Facebook page for details and the link to register. Remember it is free! And a wonderful opportunity to understand more about what ACWW does in the UN arena.

**Notice of Special World Conference 2021 -April 17, 2021 for 7 days – You are welcome to attend any or all.** Due to the uncertainty of the path of the virus and the increase in infection rates in many countries, the board thought it prudent to reschedule the 2022 Triennial World Conference to May of 2023. The Special World Conference is being called to vote on the proposal from the Board of Trustees. If you are the President or Chairman of your ACWW Member Society and have not received the notice, PLEASE, contact me as soon as possible. Please make sure your dues are current so you will be allowed to vote on this very important issue. Individual members and Category 4 Member Society will not need to vote, but are welcome to attend any of the sessions. It is a good way to stay informed about your organization.

**"2021-Secure ACWW for Future Generations"- The target date for donations is April 29, 2021-ACWW Day.** Worldwide, the impact of the COVID-19 has seen a drastic drop in donations to the "Pennies for Friendship" fund. This fund enables the ACWW Board to meet, engage with members in their areas, maintains the staff, and facilitates ACWW's global network. Each individual member is being challenged to donate \$69.77 (£50). Each member society is challenged to donate \$139.55 (£100). Please go to ACWW.org.uk for more information and a donation portal. It is very quick and easy and best of all SECURE!!

**ACWW USA Area Conference- August 1-3, 2021** Cincinnati, OH/Earlanger, KY.

**78<sup>th</sup> Country Women's Council/USA Area Meeting- Sept. 13-15, 2021** Effingham, Illinois

If you would like to receive email notifications from ACWW, please email Rowan at [info@acww.org.uk](mailto:info@acww.org.uk) and give your consent and your request.

Feel free to contact me: Bonnie Teeples, ACWW USA Area President- [usa@acww.org.uk](mailto:usa@acww.org.uk)  
ACWW Facebook page- **Associated Country Women of the World (ACWW)**

**THINGS TO REMEMBER –**

**Keep your "KAFCE NEWS" issues to refer to throughout the year.**

**AREA DIRECTOR REPORTS:****NORTHEAST – Carol Lintner**

NORTH EAST EPC was very pleased with 2020 Lessons entries:

- \* 1 County Council Accomplishment Report
- \* 7 FCE Unit Accomplishment Reports
- \* ALL Units received 100% by entering the Accomplishment Report front page
- \* 2 Council's had Community Service Project Award entries
- \* 10 FCE Unit's entered Community Service Award Projects
- \* Majority were VA or Assisted Living/Resident Centers or local school projects completed last Jan/Feb. Some were safely coordinated throughout 2020, with Staff coordinating safety prodigals.
- \* Sadly, the NE lost 49 FCE's: Not rejoining in 2021 and 4 deaths in 2020. Three Units dissolved. Many shared that the Covid experience was the turning point of no contact or communication. I wrote each member of these Units thanking them for their time and dedication to FCE and that I would inform them of any changes in KAFCE fees to encourage returning.
- \* I encouraged ZOOM through their FCS agents but most are not comfortable with technology. Learned a home phone can be used for ZOOM!
- \* I decided with COVID continuing I would mail birthday cards to each FCE aged 90 and above for 2021! Delores kindly composed a list of names/dates for me and I have forwarded that list on to NE Council Presidents, to join me if they would like. I think if even one small gesture of contacting an FCE keeps them encouraged perhaps they won't drop out. I acknowledge their Special Years of membership and/or thank them.



### World President – Magdie de Keck

At this time when so many are facing worry, fear, and even panic around what feels like a situation totally out of our control. We must remember remaining calm and focused on sensible precautions will help protect us all. ACWW first passed a resolution on immunization programs in 1980, and vaccination against potentially eradicable diseases as recently as 2016. Global investment in vaccine programs go a long way to eradicating the impact of viral infections. Our commitment to the World Health Organization must go beyond the verbal, and we must do our best to keep our communities strong and safe by following WHO advice on hand sanitation and social distancing as the best form of defense against Covid-19.

At the Triennial World Conference in Melbourne, interest expressed in our UN work, particularly a desire to understand how individual and member societies could directly participate in our advocacy work. In February, we sent a letter to all member societies asking for their support for a letter to UN negotiators working on the Political Declaration for the Commission on the Status of Women. This pointed out that women's rights are human rights, and cannot be removed from important legal treaties. This letter was signed by 185 organizations in 35 countries, representing more than 11.95 million women. It was the strongest response from ACWW's network of members and supporters in many years, if not ever, and it was a delight to see so many unite behind our message.

**Nancy Kernick, KAFCE President**, signed the form that arrived by email from Bonnie Teeple on February 21, 2020, with the message "Let the UN hear your voice" and to co-sign our letter to the Commission on the Status of Women. This letter was read during negotiations at the UN, and the UK negotiator was able to use this in leverage our point and ensure as strong a Declaration as possible was agreed. Kansas became a member of the ACWW Organization in 1939 and Ruth Sayer, United States, served as World President, 1947-1953. Bonnie Teeple, of Oregon is the ACWW USA Area President, with a membership of nine (9) million women.

In December 2020 the "Cup of Coffee" challenge, where ACWW asked each of us to donate \$30.00, (or the cost of one cup of coffee each week for a total of 10 weeks) to ACWW to help off-set the shortage of Pennies for Friendship donations. I hope many of you participated in that.

In January 2021, our World President Magdie de Kock, held a virtual "Afternoon Tea with the World President". **Nancy Kernick, KAFCE President, was able to view it and it was fun to hear Magdie talk about ACWW and share some of the happenings in ACWW.** There was another opportunity to join Magdie for a cup of tea, on Tuesday, February 23, but **Nancy Kernick, was unable to view it.** You maybe can still view the first afternoon tea on the Facebook page.

Many of us have never had the opportunity to attend a United Nations Meeting. This year you will have that wonderful opportunity! All members have been invited to attend the UN Commission on the Status of Women. It is being held virtually on March 18, 2021. The title of this meeting is "Rural Women's Role in Global Citizenship". ACWW Facebook page for details. This may be the only time we can attend for free!

I know that the worldwide pandemic has been hard on all of us, our groups, and organizations. I am so grateful that we have the technology to be able to hold conference calls, ZOOM or other virtual meetings. It gives us the opportunity to keep our organizations moving along. I'm pleased to hear about groups that are meeting in person where possible, about groups that are having virtual meetings and sharing information that way.

### SOUTH CENTRAL – Bonnie Kaufman

There has not been much activity in the SouthCentral Area because of the pandemic.

Things I have done are as follows:

- \* Contacted all units about membership lists.
- \* Contacted Independent members and regular members about years in FCE for awards.  
Also contacted units for years in FCE.
- \* Sent member and unit information to Delores for awards.
- \* Contacted units that were disbanding and encouraged some to become Independent members.
- \* Attended Area EPC judging.
- \* Discussing with some members trying to decide whether to have a spring meeting.



**NORTHWEST – Edith McClain**

**What a year! It has been a real challenge for everyone to stay connected.**

- \* Due to the Virus no 2020 meetings were held but reached out to contact County members.
- \* Since there were no meetings, most Counties carried over the Council officers.
- \* Distributed August mailing, with the pandemic, several counties had difficulty getting the August mailing information and forms, so I printed everything and mailed information.
- \* Delivered / Mailed EPC materials and keep in contact with County FCS office.
- \* EPC committee: Janie Lowry, Susan Gartrell and Diane Hrabe.
- \* NW Spring 2021 Business meeting and Area Recognition is planned for April.
- \* Heart of FCE is Sharon Stramel of Thomas County.
- \* NW Independent Members: Louise Greenberg of Smith County; Marsha Haines of Rooks, and Beverly Kindler of Norton.
- \* Dorrance Homemakers of Russell County has disbanded.
- \* Corresponded with DeLores several times, visited with Editor Sherry on behalf of Nancy and called the Russell Post Office concerning the Postal Permit, and visited with Frank at MainStreet Media about the postal permit expiration date.

**Do not have an Area Director for 2022-223-2024**

Praying we can have our Spring meeting. Our older population are holding out until everyone can get their shot. Hoping to have Fall Workshop and EPC training in person.

**SOUTHEAST – Jennine Marrone**

- \* Finished plans for combined spring and fall event.
- \* Completed, typed and copied program for November 5, 2020 meeting.
- \* Presided over meeting for spring and fall event.
- \* Sent out lessons to all County Council Presidents and anyone who requested.
- \* Sent note to all County Council President's and email about membership pins,
- \* Reported new EPC member and new address for member of SE Area EPC:  
Janie Williams, 3101 Johnston Rd, Parsons, KS 67357

**SOUTHWEST – Karen Larmer**

- \* I have just started as area director after a year of near standstill and don't really have my feet under me yet. Toward the beginning of February but due to circumstances, I really haven't had much time to devote to figuring out what needs done or how to do it given the "new normal". I received the information from Marci Price, previous area director, and she has offered to help as she is able.
- \* Southwest Area had a spring meeting last year early in March before shutdown but we did not have a fall meeting. I do not know how many reports we received since the EPC committee did not inform me as to when they were meeting, if they even did.
- \* So, I feel like we are almost starting over from scratch in a way. I am hoping to put together a spring meeting in April whether in person or remote, after making contact to ask people which they would rather do. Any input on what other areas did last year and how they accomplished that under current circumstances would be welcome.



**STANDING COMMITTEE REPORTS****State Nomination Committee- Pat Weishaar**

**Nominating Committee** – Chair, NE Pat Weishaar and her committee members throughout the state are having a hard time getting President or Treasurer Nominees needed to present for the 2021 State Conference. They may have a potential Presidential candidate. Any assistance on leads please let Pat Weishaar know. This week, March 2, Secretary Juanita Masko has resigned due to health issues.

**Encourage that newer member to run** – following KAFCE guidelines:

1. Must have served at Unit level and Council level
2. Don't overlook past life experiences/career for leadership qualities
3. Multitude of support from previous officers willing to give guidance

If you are interested, or if you have someone to suggest to serve an office, please contact Chairman of the State Nominating Committee, before June 1, 2021, Pat Weishaar, (785) 437-3160, (NE Area).

**BYLAWS: ARTICLE V – OFFICERS, SECTION 2, SECTION 3 ITEMS A, C, AND D.****CURRENT OFFICERS:**

President - Nancy Kernick elected 2018 to serve three-year term 2019, 2020, and 2021.

Vice President - Faye Spencer elected 2018 to serve two-year term 2019-2020, extend to 2022.

Treasurer – DeLores Walden elected 2018 to serve three-year term 2019-2020-2021.

Secretary – Juanita Masko, elected 2019 to serve three-year term 2020-2021-2022, has resigned due to health issues.

The State Nominating Committee was to present candidates at the **2020 State Annual Business** meeting for the election of offices of State President-Elect and State Vice-President.

If elected, the President-Elect was to serve a one-year term, 2021, while current President-Nancy Kernick serves her last year in office. Then serve as President in 2022-2023-2024.

If elected, the Vice President was to serve a three-year term of 2021-2022-2023.

**With the cancellation of the 2020 State Conference, NO elections were held. Therefore, the Executive Board has extended the elected officers' term by one year, which really only applies to Vice-President.**

Vice-President Faye Spencer served a term of 2012-2013-2014, but it was extended to 2015 when no candidate was nominated. Edith McLain was elected to serve 2016-2017 to get the rotation back in sync, but extended to 2018. Faye was re-elected to a two-year term, 2019-2020, for the same purpose, but 2020 election did not happen. To help get the elections in a better rotation, Faye Spencer will serve an additional two (2) years, term ends 2022.

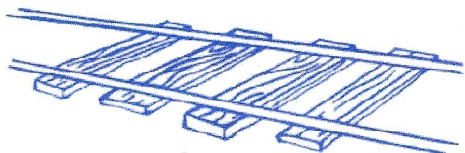
Contact Chairman of the State Nominating Committee, before June 1, 2021  
Pat Weishaar, (785) 437-3160, (NE Area).

**SAVE THE DATE**

**“Ride the Rail with FCE”**

**2021 KAFCE Conference - October 4<sup>th</sup> and 5<sup>th</sup>**

**Ramada Inn Topeka, Kansas**





**State Education Program Committee- Linda Hess**

- \* Accomplishment Reports and Community Service Projects received from Area EPC's were scanned and emailed to each State EPC member for scoring. The committee met on Zoom to compile the scores and assign rankings for state awards.
- \* Total projects judged by Area EPC's included 23 FCE Unit Accomplishment Reports in Education and Action categories; 3 County Council Accomplishment in Education category; 15 FCE Unit Community Service Projects; and 5 County Council Community Service Projects. No Independent Members reported.
- \* Thirty-eight units reported tabulated data but chose the Do Not Judge option for their reports.
- \* The committee also discussed 2022 lessons and future training dates.

State EPC training is scheduled for August 30-31, 2021 in Salina.

**Other Appointed Positions Reports****Registrar/Historian- DeLores Walden**

KAFCE has seen a decrease in membership and FCE's.

- \* If your FCE has disbanded or thinking of disbanding, please read the handbook for information on "How to Disband an FCE".
- \* If you have material that has been saved from your FCE and you don't know what to do with the material. Please give the material to your County President, Area Director or the State Registrar so the material can be put in the Archives at K-State. We need to preserve our history.
- \* Gold seals were received by 67 FCEs and 15 FCEs special seals were given to FCEs.
- \* Gold seals were earned in 2020, if your Standard of Excellence was mailed to the KAFCE Registrar.
- \* The 2021 Special awards were years in existence and the form again mailed to the KAFCE Registrar.
- \* 2021 members special recognition was received by 92 members.

*Ruth Meyer, Nemaha County and Pauline Russell, Johnson County each received 70 years as a member. Congratulation to Ruth and Pauline for your dedication to KAFCE.*

**Membership List/Records- Judy Fullmer**

**KAFCE has 678 members including 53 Independent Members.**

**Parliamentarian - Judy Fullmer  
is now a member of the NAFCE ByLaws**

**Editor of KAFCE News- Sherry Linneman**

- \* Plans are for March, June, and Fall Issue during 2021.
- \* All news articles must go to President and she will format them to send to Editor, who will do the final touch for the Printer.
- \* Our Bulk Rate Permit is good for one more year.

**THANK YOU**

Thank you so much for being apart of the FCE family, we appreciate all that you all do for your areas.



**State Marketing- Dorene Reimer**

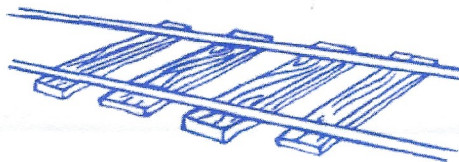
- \* There have been no marketing items purchased during 2020.
- \* Discussion of Face Masks with FCE logo for a marketing item.
- \* Also discussed table favors for the 2021 State Conference.

**William Allen White- Anita Felzke**

- \* I am the representative from FCE for the WAW (William Allen White) award winners. We have been given the list (updates keep coming in) for 2021. I have started reading from the list (and making notes on my reading).
- \* I will be attending the Board Meeting via ZOOM on March 5, 2021.

**Webmaster- Marcy Price**

- \* All pages of KAFCE website have been updated. New 2021 information has been added.
- \* A page was created entitled EPC member for ready accessibility to new 2021 EPC forms.
- \* The latest Newsletter was added to the website.
- \* Area Directors should submit information to the Webmaster for any dates that have been set for District Recognition Days and Fall Workshop as soon as information is available.

**“Ride the Rail with FCE”****2021 KAFCE Conference - October 4<sup>th</sup> and 5<sup>th</sup>****Ramada Inn Topeka, Kansas**

Plans are under way for an “EXCITING” 2-day conference in Topeka. Prizes by the yard (money for scholarships), Make & Take, Tours and recognition of past presidents, county presidents, Heart of FCE, and award winners will be included in the conference. Watch for details and registration form in the Summer issue of the KAFCE News. DeLores Walden, Shawnee County and Tina Bailey, Jackson County co-chairs.

**Dissolution of an FCE Unit**

Notification shall be sent to State President, State Treasurer, State Registrar, Area Director, and County Council President

NW/Russell Co – Dorrance Homemakers FCE  
NE/Douglas Co - India FCE  
NE/Johnson Co – Ideal Homemakers FCE  
NE/Potawatomie Co – Green Valley FCE  
SW/Ford Co - Helping Hand FCE  
SW/Pawnee Co -Rozel FCE  
SW/Rush Co -Colorful Calico FCE  
SC/Butler Co -Highland FCE  
SC/Ellsworth -Friendly Neighbors FCE  
SC/Ellsworth – Inquisitive Mrs. FCE  
SC/Sedgwick Co - Homesteaders FCE



### American Income Life Insurance Company (AIL)

Robin Denham, Public Relations, American Income Life Cell - 816-835-2636 / fax - 254-761-6568 / [rdenham@aillife.com](mailto:rdenham@aillife.com)

- \* We are only doing virtual ZOOM meetings with members of our groups, no in-home visits. Everyone seems to like this way better so we may continue to offer this going forward.
- \* We do have a new benefit called the AIL Plus which is a **smart phone app discount card** that is for the member and their family with 60-80% savings on: Hearing, Eye, Prescriptions, Chiropractic, Vitamins, Medical equipment, Diabetic supplies, MRI & CT scans, Telemedicine and Lab testing. This is great savings for those that have used it.
- \* Each year, for a small premium, KAFCE insures each of the State Board Members with a \$10,000 Accidental Death & Dismemberment policy with the American Income Life Insurance Company. Included with, no extra cost, that premium, is coverage for every member of KAFCE of a \$4,000 Accidental Death & Dismemberment benefit.
- \* American Income Life Insurance Company does not do a mail out every year to all KAFCE Members notifying of this benefit. Mail outs occur every three to five years and it contains a yellow-card members could return to American Income Life Insurance Company for the purpose of receiving their certificate of coverage, designating a beneficiary, receiving free Child Safe Kits for their children and/or grandchildren, and opportunities to take advantage of other discounted services for themselves and their family.
- \* Each KAFCE Member can choose whether or not to send American Income Life Insurance Company the yellow card. Even if a member should choose not to return the yellow card, they still are insured.
- \* In 2019, American Income Life Insurance Company gave a monetary donation to KAFCE Treasury based on the number of 'yellow cards' that were returned. American Income Life Insurance Company has a full membership list of 2020 KAFCE members, and every name on the list has the \$4,000 insurance benefit. We are grateful to American Income Life Insurance Company for offering this benefit. Your family should be informed that you have this insurance so that, in case of an emergency, it can be redeemed.

### MEMORIAL LIST

Death of a FCE Member shall be sent to State President and State Treasurer.  
State President will notify State Membership.

### PAST STATE PRESIDENTS TO REMEMBER

#### **KAFCE State President 1983-1985 –**

Erma Maxine John- Greely Co/SW Area, 60-year membership – (91, died August 14, 2019)

#### **KAFCE State President 1989-1991 –**

Juanita M. Gillaspie, SC Area, 50+ year membership - (88, Died October 28, 2020)

NAFCE Treasurer, NAFCE Program Coordinator, NAFCE President Alumni Association, ACWW Kansas Representative, 2008 KAFCE Extraordinary Woman in 2008.

### MEMBERS TO REMEMBER

Patricia L. Bennett, Independent, Nemaha Co/NE Area, (91, died August 26, 2020).

Lola Fern Hubbard Droge, Kansas-Nebraska FCE, Nemaha Co/ NE Area (100, died September 7, 2020).

Bettie LuAnn McNaughton, Jockukans FCE, Johnson Co/NE Area, (83, died April 18, 2020).

Jean A. Stewart, Green Valley FCE, Pottawatomie Co/NE Area (79, died May 19, 2020).

Dorothy M. Tanner, Independent, Pottawatomie Co/NE Area (101, died November 12, 2020), was a member of Laclede FCE over 75 years.

Glennis Bell, Highland FCE, Butler Co/SC Area, (93, died June 18, 2020).

Rosalie "June" Sparr, Viola FCE, Sedgwick Co/SC Area, (93, died August 3, 2020).

Donna Pauline O'Neal, Eagles FCE, Sedgwick Co/SC Area, (91, died January 20, 2021).

Margaret Bruenger, South Logan FCE, Allen Co/SE Area, (92 years, died January 8, 2020).

Nelda L. Dean, Rock 'n Roll FCE, Neosho Co/SE Area, (80, died October 9, 2020).

Claudia Maberry -Starlite FCE, Bourbon Co/SE Area (96, died July 17, 2020).

Virginia Pringle, Independent Member, Osage Co/SE Area (96, died September 12, 2020).

Marjorie Sue Stringer, Starlite FCE, Bourbon Co/SE Area, (85, died December 15, 2020).



KANSAS ASSOCIATION OF FAMILY AND  
COMMUNITY EDUCATION

**KAFCE NEWS**

Non-profit organization  
U.S. Postage Paid  
Permit #669  
Russell, KS 67665

Sherry Linneman  
220 East Street  
Smith Center, KS 66967

Postmaster:  
Time Dated Material  
Do Not Delay

**2021 Calendar of Events**

- \*\* Board of Director's Meeting – June – TBA
- \*\* National Conference – July—TBA
- \*\* Board of Director's Meeting – Sept. TBA
- \*\*EPC Leadership Training, Salina -
- \*\*2021 KAFCE State Conference –  
October 4-6, 2021  
"Ride the Rails to FCE" – Ramada Hotel,  
Topeka
- \*\* KAFCE Board of Director's Meeting,  
At State Conference in Topeka
- \*\*National FCE Week –  
October (3<sup>rd</sup> full week)
- \*\*National Family Week –  
November (week of Thanksgiving)

Did you know Kansas FCE has a  
website? Check it out at [www.kafce.org](http://www.kafce.org).  
Submit articles for the "news" page to  
Marcy Price -[thesewinglady@yahoo.com](mailto:thesewinglady@yahoo.com).

Kansas Association for Family and Community Education  
Founded February 9, 1954  
Published March, July and November by  
Kansas Association for Family and Community Education  
Newton, KS 67114  
Submit all News items to: Sherry Linneman  
220 East Street; Smith Center, KS 66967